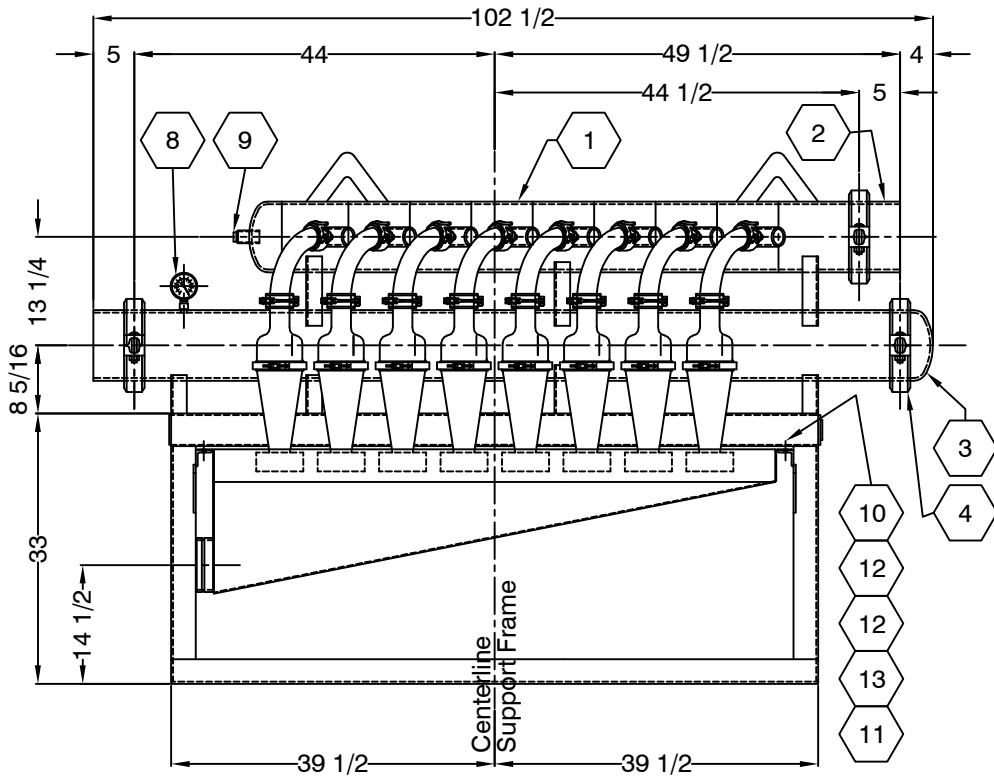


**PARTS LISTING**

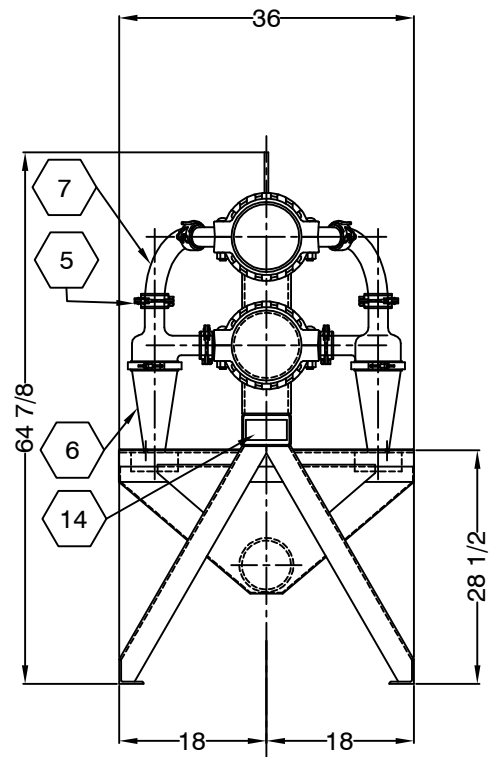
MARK	PART NO.	QUAN.	DESCRIPTION	WEIGHT
1	65040-M	1	Desilter Manifold	893.15
2	68053	2	Adapter Nipple	23.79
3	68034-M	1	End Cap, Grooved	18.00
4	68017	3	8" Coupling	69.00
5	68002	48	2" Coupling	72.00
6	DL4100	16	4" Cone Assembly	224.00
7	DBL100	16	2", 90° Disch. Elbow	20.00

MARK	PART NO.	QUAN.	DESCRIPTION	WEIGHT
8	DBLFG100	1	Gauge, 0-60	0.50
9	68031	1	Plug, Clean-Out Port	0.40
10	B03F52061600020	6	Capscrew, 3/8"	0.29
11	N19052061600000	6	Hex Nut, 3/8"	0.10
12	W01052160706000	12	Flatwasher, 3/8"	0.18
13	L03052000006000	6	Lockwasher, 3/8"	0.04
14	0062	1	Nameplate	0.10

TOTAL WEIGHT 1321.55



**SIDE ELEVATION VIEW**



**END ELEVATION VIEW**

REVISIONS	DATE	DESCRIPTION	ZONE	NO.
	BY			
	11/20/00	+ Parts Listing & Title Change		1

**NOTES**  
1. All dimensions are in inches unless otherwise noted.

**NOTICE**

The information contained herein is proprietary and may not be copied or transmitted to another party without the written consent of the owner, THE DOUBLE LIFE CORP., INC.

**DC** the double life corp., inc.  
TITLE  
**INSTALLATION DRAWING & PARTS LISTING**  
**MODEL NO. V-416 DESILTER**

PART NO.	DRAWN BY	DATE	SCALE	REVIEWED BY
65040	JDH	2/17/98	NTS	SB
SHEET NO.	DRAWING NO.	REV. NO.	SIZE	SEQ.
1/1	99-00206	1	A	1