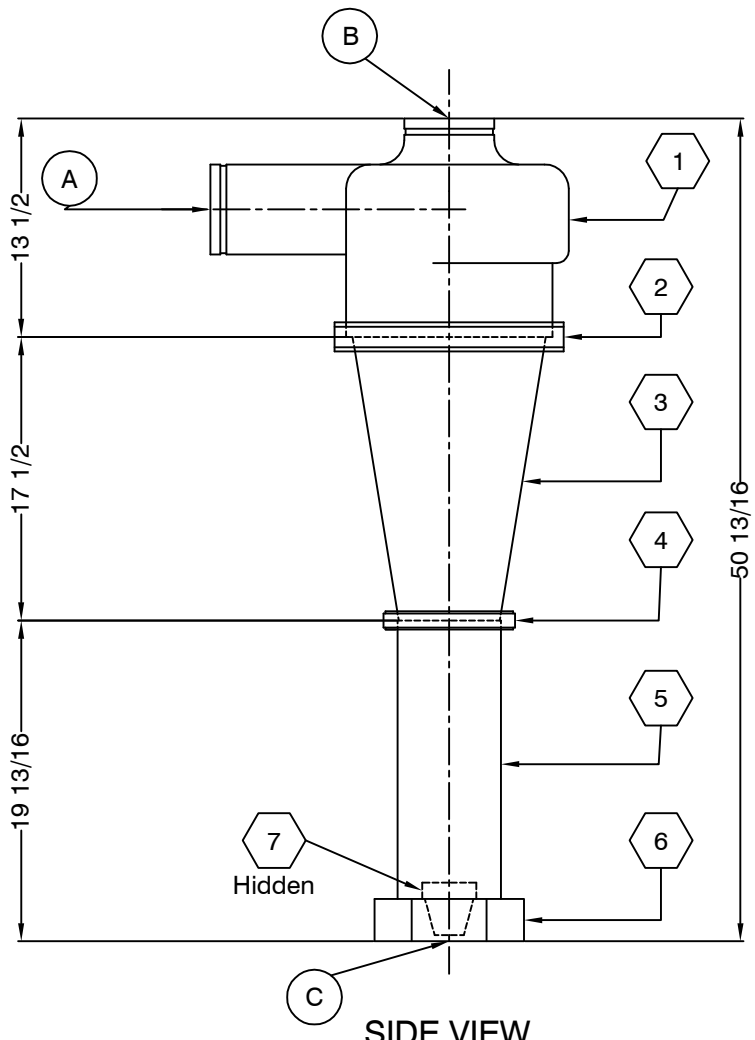


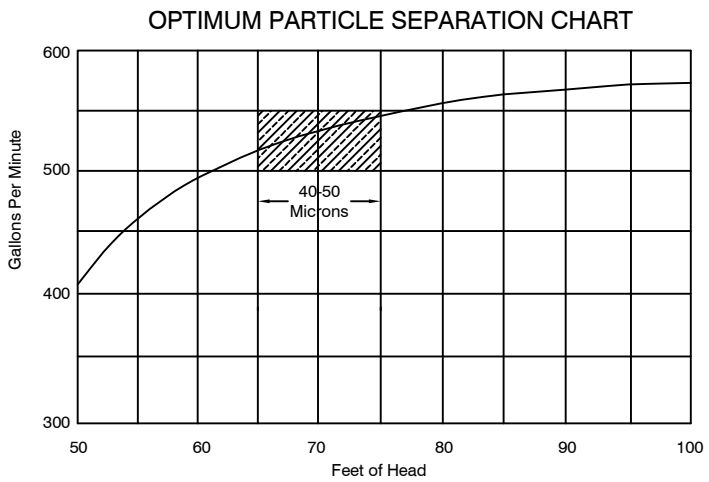
PLAN VIEW



SIDE VIEW

BILL OF MATERIALS						
MARK	PART NO.	QUAN.	DESCRIPTION	LENGTH	WIDTH	WEIGHT
1	DL10F1	1	10" Feed Section			39.00
2	DL10C2	1	10" Upper Cone Clamp			3.50
3	DL10MC3	1	10" Mid-Cone Section			19.50
4	DL5SCC2	1	Cone Clamp 5" Slimline			1.50
5	DL10LC5	1	10" Lower Cone Body			17.50
6	DL10AH7	1	10" Apex Holder			3.50
7	DL10A6	1	Apex Valve			1.00
TOTAL WEIGHT						85.00

PORT SCHEDULE		
MARK	DESCRIPTION	Size
A	Inlet	5" Groove
B	Discharge	5" Groove
C	Underflow	Adjustable



NOTE: Optimum separation is obtained when operating in shaded range.

REVISIONS		NO.	ZONE	DESCRIPTION	BY	DATE
		1	All	Gen Revision	DH	01/25/99
		2		Item 4	MW	03/17/99

NOTES

1. All dimensions are in inches unless otherwise noted.

NOTICE

The information contained herein is proprietary and may not be copied or transmitted to another party without the written consent of the owner, THE DOUBLE LIFE CORP., INC.

DL the double life corp., inc.

TITLE					
CUSTOMER DRAWING					
INSTALLATION DRAWING & PARTS LISTING					
DOUBLE LIFE 10" CONE ASSEMBLY					
PART NO.	DL1000	DRAWN BY	MW	DATE	9/22/98
SHEET NO.	1/1	DRAWING NO.	99-00869	REV. NO.	2
SCALE	NTS	SIZE	A	REVISED BY	SB