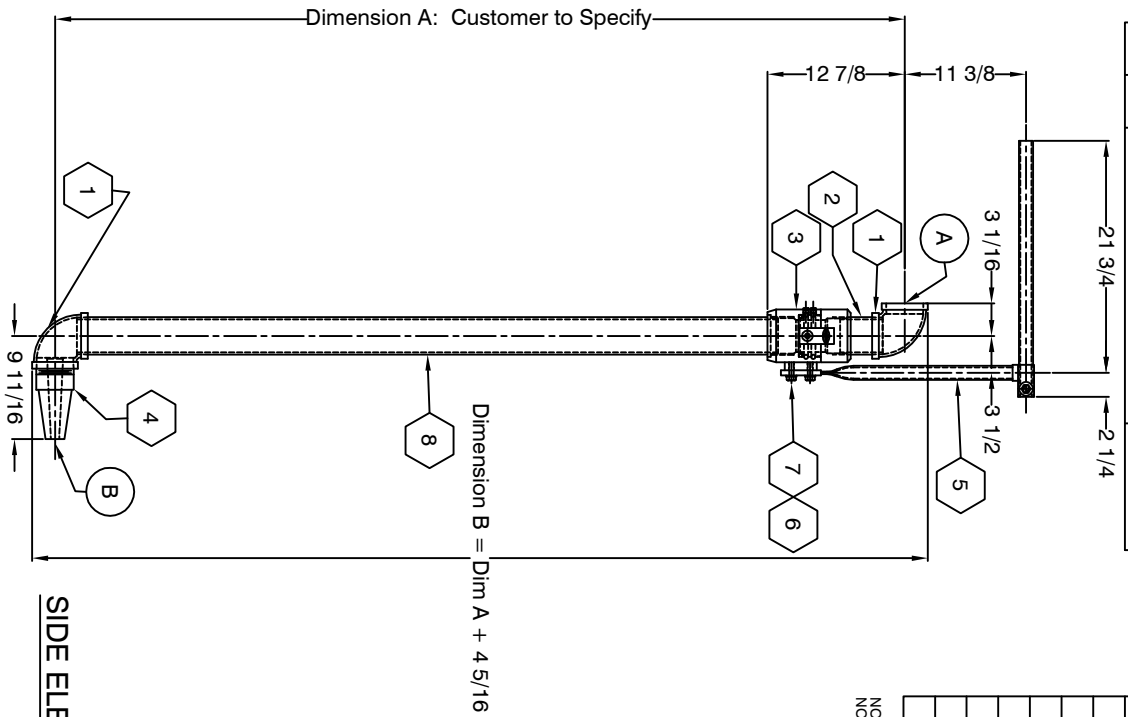


PORT SCHEDULE			
MARK	QUAN.	DESCRIPTION	SIZE
A	1	Inlet	3" NPT
B	1	Discharge	3/4" Orifice



BILL OF MATERIALS						
MARK	PART NO.	QUAN.	DESCRIPTION	LENGTH	WIDTH	WEIGHT
1	8201-241	2	3" 90° Elbow			10.72
2	8481-024-2208	1	3" L.P. Riser	4		2.53
3	0427	1	3" L.P. Swivel Assembly			24.87
4	0153-3330	1	Jet Nozzle, Rubber, 3" x 3/4" Bore			3.00
5	0429	1	Handle Assembly			8.15
6	B03F52081300020	2	Bolt, HH, Gr. 5, Plated 1/2-13, 1-1/4" L.			0.23
7	L03052000008000	2	Lockwasher, Std. Spiral, Plated, 1/2"			0.06
8	ST170	1	3" L.P. Discharge Tube length to be determined by WT			Note 2

WEIGHT [Items 1 thru 7] (Lbs.): 49.56

NOTE 1: Length = Dim. A - 13 15/16
 NOTE 2: Weight = Length (Ft.) x 7.58 Lb./Ft.

SIDE ELEVATION

NOTES

- All dimensions are in inches unless otherwise noted.

REVISIONS

NO.	ZONE	DESCRIPTION	BY	DATE
1	All	General Revision	DH	4/27/00
2		X-ed Item 4 frm. P/N 8482-24122, & Port B Size	DH	11/16/00
3		X-ed Item 4 to new design; description & weight	DH	3/29/02

NOTICE

The information contained herein is proprietary and may not be copied or transmitted to another party without the written consent of the owner, THE DOUBLE LIFE CORP., INC.

DL the double life corp., inc.

INSTALLATION DRAWING
GENERAL ARRANGEMENT
3" P. BOTTOM-TYPE MUD GUN

PROJECT NO.	FORMULARY DATE	DESIGNER	REVIEWER
0844-XXXXX	JDH	1/24/98	NTS
DATE PLOTTED	SCALE	SIZE	NO.
1/1	99-00941	S	A 1