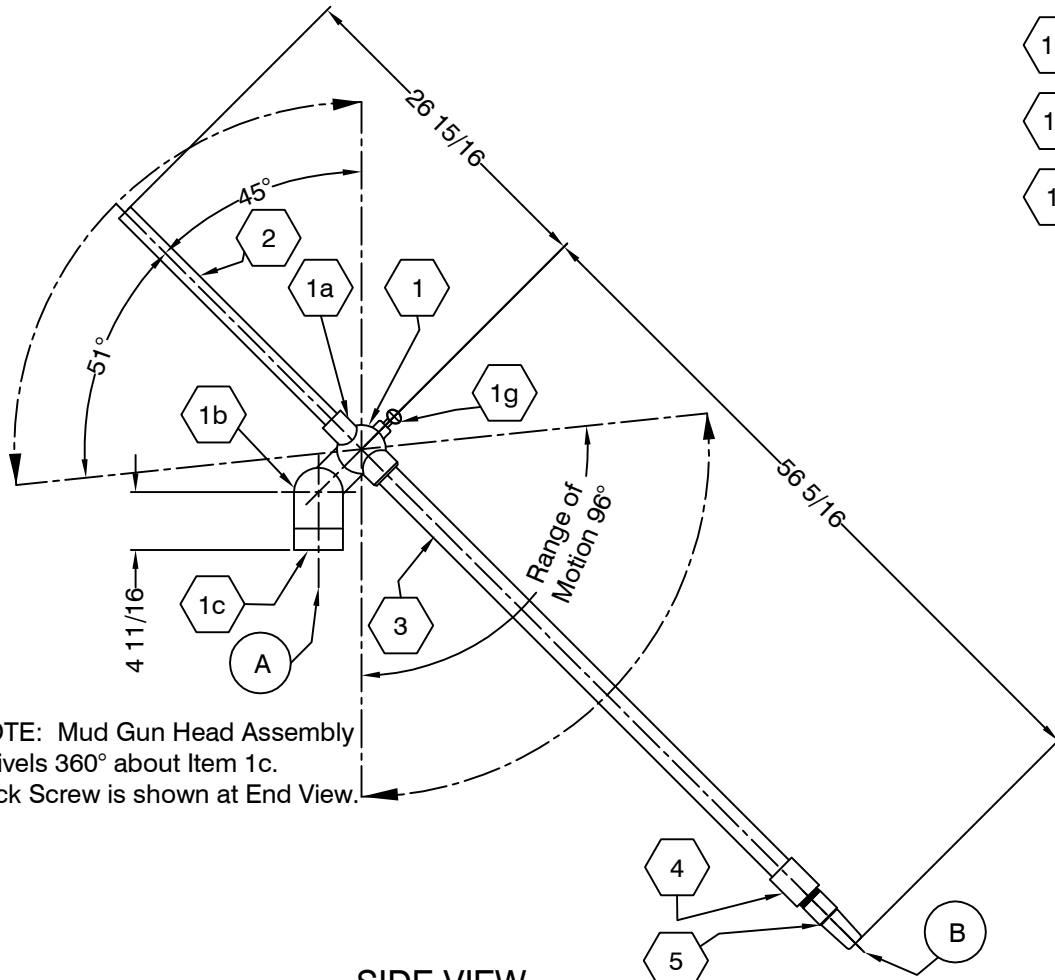


PORT SCHEDULE			
MARK	SIZE	RATING	PART NO.
A	2" NPT	3000#	
B	1/2"	3000#	0156-250
	5/8" Std.	3000#	0156-625
	3/4"	3000#	0156-678

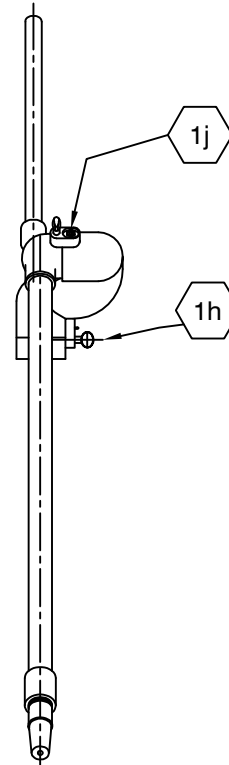
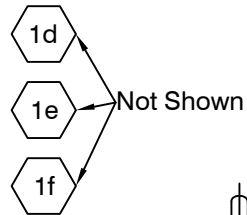
PARTS LISTING														
MARK	PART NO.	QUAN.	DESCRIPTION	WEIGHT	MARK	PART NO.	QUAN.	DESCRIPTION	WEIGHT	MARK	PART NO.	QUAN.	DESCRIPTION	WEIGHT
1	0396	1	Swivel Assembly	33.00	1d	0399B	52	Steel Balls	0.50	1j	0399D	2	Grease Zerk	0.09
Item 1 consists of the following (1a thru 1j):					1e	0399A	2	Seal	0.19	2	0378	1	Handle	3.36
1a	0397	1	Head	8.50	1f	0399C	2	O-Ring	0.01	3	0377	1	Discharge Tube	13.91
1b	0365	1	Body	17.62	1g	8696-28025	1	Lock Screw	0.16	4	8130-122	1	Coupling	2.19
1c	0398	1	Sub	5.76	1h	8696-28024	1	Lock Screw	0.18	5	0156-XXX (Ref. Port Sched.)	1	Choke Nipple	3.75
													TOTAL WEIGHT (Lbs.):	56.21



PLAN VIEW



SIDE VIEW



END VIEW

P/N 0399, 2" Swivel Repair Kit contains Items 1d, 1e, 1f & 1J for one of the two swivel heads.
Two Repair Kits are required for the complete Swivel Assembly.

NOTE: Mud Gun Head Assembly swivels 360° about Item 1c.
Lock Screw is shown at End View.

NO.	ZONE	DESCRIPTION	REVISIONS	
			DATE	BY
1	All	General Revision	9/23/99	DH
2	All	Part Number	12-27-02	MW

NOTICE
1. All dimensions are in inches unless otherwise noted.
The information contained herein is proprietary and may not be copied or transmitted to another party without the written consent of the owner, THE DOUBLE LIFE CORP., INC.

DC the double life corp., inc.

TITLE
CUSTOMER DRAWING
INSTALLATION DRAWING & PARTS LISTING
2" PIVOT TYPE MUD GUN ASSEMBLY

REVIEWED BY
SB

PART NO.	DRAWN BY	DATE	SCALE
0341-0XX	MW	5/5/99	NTS
SHEET NO.	DRAWING NO.	REV. NO.	SIZE
1/1	99-00756	2	A