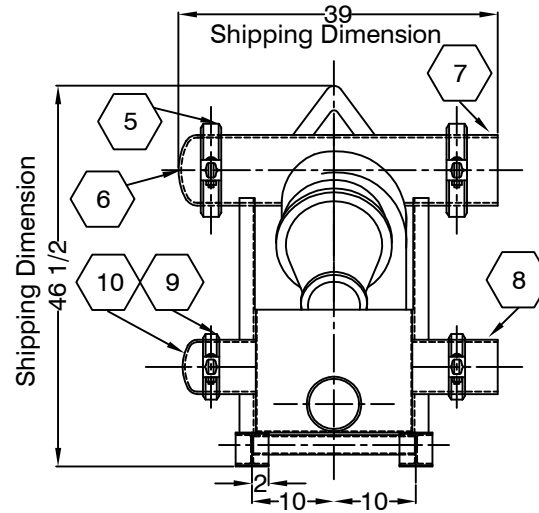
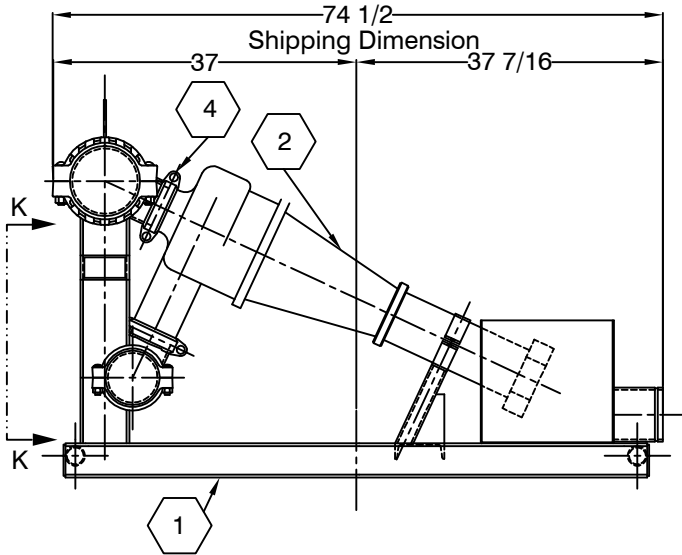
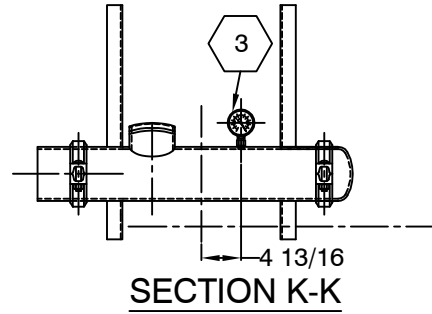
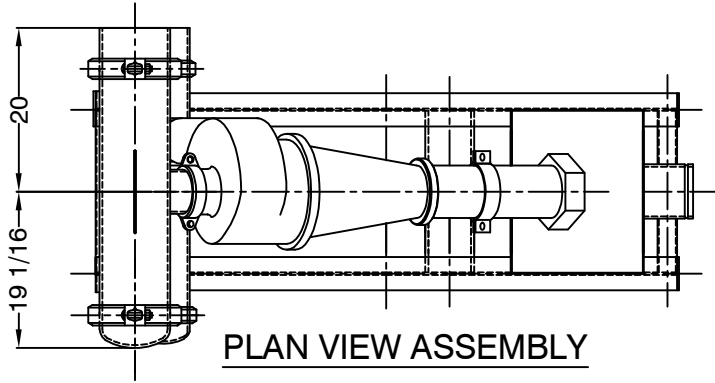


BILL OF MATERIALS

MARK	PART NO.	QUAN.	DESCRIPTION	LENGTH	WIDTH	WEIGHT	MARK	PART NO.	QUAN.	DESCRIPTION	LENGTH	WIDTH	WEIGHT
1	69000-M	1	I-110 Desander Manifold			435.77	6	68021	1	Cap, 8" GRV.			12.00
2	DL1000	1	10" Cone Assembly			86.00	7	68053	1	Nipple			13.97
3	DBLFG100	1	Pressure Guage, 0-60 psi			0.50	8	68052	1	Nipple			9.49
4	68014	2	Clamp 5"			11.00	9	68012	2	Clamp 6"			6.70
5	68017	2	Clamp 8"			12.50	10	68017	2	Cap, 6", GRV			7.00
											TOTAL WEIGHT	611.02	



REVISIONS

NO.	ZONE	DESCRIPTION
1	ALL	PARTS LIST
2	ALL	GEN

NOTES

1. All dimensions are in inches unless otherwise noted.

NOTICE

The information contained herein is proprietary and may not be copied or transmitted to another party without the written consent of the owner, THE DOUBLE LIFE CORP., INC.

DL the double life corp., inc.

**INSTALLATION DRAWING & PARTS LISTING
I-110 DESANDER**

PART NO.	69000	DRAWN BY	MW	DATE	11/11/98	SCALE	NTS	REVISED BY	SB
SHEET NO.	1/1	DRAWING NO.	99-01297	REV. NO.	2	SIZE	A	SEQ.	1