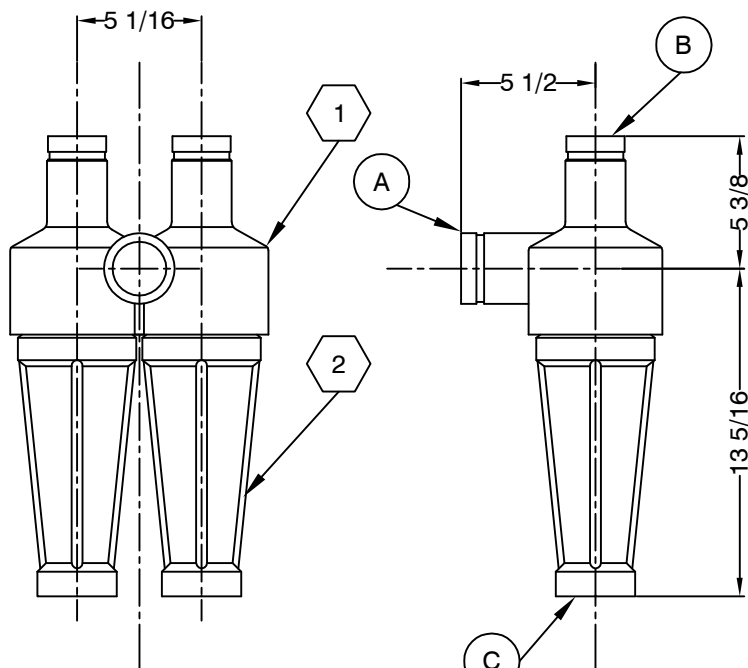


**PLAN VIEW**



**SIDE VIEW**

**END VIEW**

BILL OF MATERIALS				
P/N DBL96-22-220B, UT4 Cone Ass'y. w/ 3/8" Fixed Apex				
MARK	PART NO.	QUAN	DESCRIPTION	WEIGHT
1	DBL96-22-221	1	Feed Section, UT4 Desilter Cone	6.00
2	DBL96-22-338	2	Apex With Fixed Orifice, 3/8", UT4 Desilter Cone	5.50
TOTAL WEIGHT				11.50

BILL OF MATERIALS				
P/N DBL96-22-220A, UT4 Cone Ass'y. w/ 1/2" Fixed Apex				
MARK	PART NO.	QUAN	DESCRIPTION	WEIGHT
1	DBL96-22-221	1	Feed Section, UT4 Desilter Cone	6.00
2	DBL96-22-312	2	Apex With Fixed Orifice, 1/2", UT4 Desilter Cone	5.50
TOTAL WEIGHT				11.50

BILL OF MATERIALS				
P/N DBL96-22-220C, UT4 Cone Ass'y. w/ 5/8" Fixed Apex				
MARK	PART NO.	QUAN	DESCRIPTION	WEIGHT
1	DBL96-22-221	1	Feed Section, UT4 Desilter Cone	6.00
2	DBL96-22-358	2	Apex With Fixed Orifice, 5/8", UT4 Desilter Cone	5.50
TOTAL WEIGHT				11.50

PORT SCHEDULE		
MARK	DESCRIPTION	Size
A	Inlet	2" Grooved
B	Discharge (Overflow)	2" Grooved
C	Underflow (See Cone P/N)	3/8", 1/2", 5/8"

**FLOW REQUIREMENTS**

150 GPM @ 91 Feet of Head (per Assembly as shown)

NO.	ZONE	DESCRIPTION	REVISIONS			
			BY	DATE		
1	All	General Revision	DH	01/20/99		

**NOTES**  
 1. All dimensions are in inches unless otherwise noted.

**NOTICE**  
 The information contained herein is proprietary and may not be copied or transmitted to another party without the written consent of the owner, THE DOUBLE LIFE CORP., INC.

**DC** the double life corp., inc.

TITLE  
**CUSTOMER DRAWING  
 INSTALLATION DRAWING &  
 PARTS LISTING  
 UT4 CONE ASSEMBLY**

PART NO.	DRAWN BY	DATE	SCALE
See BOM	MW	12/17/98	NTS
SHEET NO.	DRAWING NO.	REV. NO.	SIZE SEQ.
1/1	99-00998	1	A 1